

# Mises University Schedule

July 24 – 30, 2016 • Mises Institute

- All sessions take place at the Mises Institute, 518 West Magnolia Avenue, Auburn, Alabama
- All times are central daylight time.
- Complimentary refreshments outside in Hogan Graduation Area during breaks.
- Complimentary parking at the Institute, Boyd Dorm, and AU Hotel.
- Students on scholarship are expected to attend every class period. Please wear your nametag at all times.
- During classes, please remember to silence mobile devices and use unobtrusively.

**WIFI Network at Mises Institute: Mises2016 Password: Rothbard2016!**  
**(There is no WIFI access at Boyd Dorm.)**

**Note:** All lecture sessions will be audio recorded **[A]**, video recorded **[V]**, and/or live-streamed on YouTube **[L]**, with the exception of Judge Napolitano’s law course. For live video, see **mises.org/live**.

Questions for faculty may be addressed to each faculty member during his office hours, or written and dropped into the Q&A box to be addressed at the Friday afternoon faculty panels, or emailed to [mthornton@mises.org](mailto:mthornton@mises.org).

## Meeting Room Locations:

- ↔ **WOLFE LECTURE HALL** — Second floor
- ↔ **SCHLARBAUM SEMINAR ROOM** — Second floor
- ↔ **CONDON LECTURE HALL** — First floor, near bookstore
- ↔ **HOGAN AMPHITHEATER** — Outdoors, near Ward Conservatory
- ↔ **HOGAN GRADUATION AREA** — Outdoors in back (meals and breaks)
- ↔ **WARD CONSERVATORY** — First floor (laptop station, printer)
- ↔ **WARD LIBRARY** — First floor (public computers, printer)

## Sunday July 24

- |                  |   |
|------------------|---|
| 1:00 p.m.        | Mises Institute Libraries are open  |
| 5:00 – 7:00 p.m. | Registration, bookstore open, Groome shuttle from Boyd Dorm and Auburn University Hotel to Institute every 15 minutes |
| 6:00 p.m.        | Dinner at the Institute   |
| 7:00 p.m.        | Welcome, <b>Jeff Deist (WOLFE LECTURE HALL) A/V/L</b>   |
| 7:05 p.m.        | Faculty Introductions, <b>Salerno A/V/L</b>   |
| 7:15 p.m.        | Down with “Leadership”: Against the Election. <b>Woods A/V/L</b>  |
| 8:00 p.m.        | Social Hour (optional)  |
| 8:00 – 9:00 p.m. | Groome shuttle from front door of Mises to Boyd Dorm and AU Hotel every 15 minutes                                    |
| 9:30 p.m.        | Institute closes  |

## Monday July 25

- |                        |  |
|------------------------|--|
|                        | All sessions in Wolfe Lecture Hall   |
| 7:30 – 8:30 a.m.       | Breakfast at Village Dining Hall, Auburn Univ. (wear nametag for admission)                              |
| 7:15 – 8:15 a.m.       | Shuttle from dorm and hotel to Village Dining Hall every 15 minutes                                      |
| 8:15 – 9:00 a.m.       | Coffee at the Institute, shuttle from dorm, hotel, Village Dining Hall to the Institute every 15 minutes |
| 9:00 – 9:45 a.m.       | The Birth of the Austrian School. <b>Salerno A/V/L</b>   |
| 10:00 – 10:45 a.m.     | Subjective Value and Market Prices. <b>Howden A/V/L</b>  |
| 11:00 – 11:45 a.m.     | Praxeology: The Method of Economics. <b>Gordon A/V/L</b>   |
| 11:45 a.m. – 1:00 p.m. | Lunch at the Institute   |
| 1:00 – 1:45 p.m.       | The Division of Labor and Social Order. <b>Herbener A/V/L</b>  |
| 2:00 – 2:45 p.m.       | Money. <b>Engelhardt A/V/L</b>   |
| 3:00 – 3:45 p.m.       | Austrian Capital Theory. <b>Garrison A/V/L</b>   |
| 4:00 – 4:45 p.m.       | Entrepreneurship. <b>Klein A/V/L</b>   |

4:45 – 5:15 p.m.	Faculty Office Hours: <b>Woods:</b> Schlarbaum Seminar Room <b>Salerno:</b> Research Wing, Second floor <b>Howden and Engelhardt:</b> Condon Hall <b>Gordon and Herbener:</b> Faculty Office near bookstore <b>Garrison:</b> Ward Library Fireplace, First floor <b>Klein:</b> Wolfe Hall
5:15 p.m.	Dinner at the Institute
6:00 p.m.	Bookstore closes
6:30 p.m.	An Evening with <b>Judge Napolitano (WOLFE HALL) A/V/L</b>
7:30 – 8:30 p.m.	Study Time and Social Hour (optional), shuttle from front door of the Institute to dorm and hotel every 15 minutes
8:30 p.m.	Institute closes

Tuesday July 26

Mises University student scholarships are sponsored by generous donors. Please pick up appreciation forms today at the Registration Table near the front door to write a thank-you note to your sponsor(s) and return to the front desk by the end of the day Thursday, for mailing.

7:30 – 8:30 a.m.	Breakfast at Village Dining Hall, Auburn Univ. (wear nametag for admission)
7:15 – 8:15 a.m.	Shuttle from dorm and hotel to Village Dining Hall every 15 minutes
8:15 – 9:00 a.m.	Coffee at the Institute, shuttle from dorm, hotel, Village Dining Hall to the Institute every 15 minutes
9:00 – 9:45 a.m.	Common Objections to Capitalism. <b>Terrell (WOLFE HALL) A/V/L</b>
10:00 – 10:45 a.m.	Calculation and Socialism. <b>Salerno (WOLFE HALL) A/V/L</b>
11:00 – 11:45 a.m.	Concurrent Sessions: 1. An Austrian Critique of Mainstream Economics. <b>Block (WOLFE HALL) A/V/L</b> 2. Energy Economics. <b>Murphy (SCHLARBAUM SEMINAR ROOM) A</b>
11:00 a.m. – Noon	3. The Constitution and the Free Market I. <b>Napolitano</b> (Pre-registration required) <b>(CONDON HALL)</b>
Noon – 1:00 p.m.	Lunch at the Institute
1:00 – 1:45 p.m.	The Economics of Fractional Reserve Banking. <b>Herbener (WOLFE HALL) A/V/L</b>
2:00 – 2:45 p.m.	Concurrent Sessions: 1. The Place of Finance and Financial Markets in a Free Society. <b>Howden (WOLFE HALL) A/V/L</b> 2. Minimum Wage. <b>Thornton (SCHLARBAUM SEMINAR ROOM) A</b>
2:00 – 3:00 p.m.	3. The Constitution and the Free Market II. <b>Napolitano</b> (Pre-registration required) <b>(CONDON HALL)</b>
3:00 – 3:45 p.m.	Concurrent Sessions: 1. Economics of the Stateless Society. <b>Murphy (WOLFE HALL) A/V/L</b> 2. Monopoly, Competition, and Antitrust. <b>DiLorenzo (CONDON HALL) A/V/L</b>
4:00 – 4:45 p.m.	Sweatshops. <b>Powell (WOLFE HALL) A/V/L</b>
5:00 – 5:30 p.m.	Faculty Office Hours <b>Terrell and Howden:</b> Schlarbaum Seminar Room <b>Salerno:</b> Research Wing, Second floor <b>Block:</b> Faculty Office behind bookstore checkout <b>Herbener:</b> Faculty Office near bookstore <b>Murphy:</b> Faculty Office, Research Wing, Second floor <b>DiLorenzo:</b> Condon Hall <b>Powell:</b> Wolfe Hall <b>Napolitano:</b> Research Wing, Second floor <b>Thornton:</b> Research Wing, Second floor
5:30 p.m.	Group photo in Amphitheatre (Please no images on t-shirts. Collared or polo shirt preferred.)
5:45 p.m.	Dinner at the Institute
6:45 p.m.	“Is an Academic Career for You?” (optional) <b>CONDON HALL A/V</b>
7:30 – 8:30 p.m.	Study time and Social Hour (optional). Shuttles from front door of Mises to dorm and hotel every 15 minutes
8:30 p.m.	Institute closes

Wednesday July 27

7:30 – 8:30 a.m.	Breakfast at Village Dining Hall, Auburn Univ. (wear nametag for admission)
7:15 – 8:15 a.m.	Shuttle from dorm and hotel to Village Dining Hall every 15 minutes
8:15 – 9:00 a.m.	Coffee at the Institute, shuttle from dorm, hotel, Village Dining Hall to the Institute every 15 minutes
8:30 – 9:00 a.m.	Faculty Office Hours: <b>Napolitano</b> (Research Wing, Second floor)
9:00 – 9:45 a.m.	The Austrian Theory of the Business Cycle. <b>Garrison (WOLFE HALL) A/V/L</b>
10:00 – 10:45 a.m.	Concurrent Sessions: 1. Environmental and Resource Economics. <b>Terrell (WOLFE HALL) A/V/L</b> 2. Everyday Logic of Economics. <b>Gordon (SCHLARBAUM SEMINAR ROOM) A</b>
10:00 – 11:00 a.m.	3. The Constitution and the Free Market III. <b>Napolitano</b> (Pre-registration required) <b>(CONDON HALL)</b>
11:00 – 11:45 a.m.	Concurrent Sessions: 1. The Time Preference Theory of Interest & Its Critics. <b>Herbener (WOLFE HALL) A/V/L</b> 2. How We Won the Drug War. <b>Thornton (CONDON HALL) A/V/L</b> 3. Anarchism as a Comparative Institutional Research Program (Graduate Seminar by invitation only). <b>Powell (SCHLARBAUM SEMINAR ROOM) A</b>
11:45 a.m. – 1:00 p.m.	Lunch at the Institute
1:00 – 1:45 p.m.	Concurrent Sessions: 1. Defending the Undefendable. <b>Block (WOLFE HALL) A/V/L</b> 2. Monetary Policy Regimes. <b>Engelhardt (SCHLARBAUM SEMINAR ROOM) A</b>
1:00 – 2:00 p.m.	3. The Constitution and the Free Market IV. <b>Napolitano</b> (Pre-registration required) <b>(CONDON HALL)</b>
2:00 – 2:45 p.m.	Concurrent Sessions: 1. Hayek and Keynes: Head to Head. <b>Garrison (WOLFE HALL) A/V/L</b> 2. Murphy vs. Krugman. <b>Murphy (CONDON HALL) A/V/L</b>
3:00 – 3:45 p.m.	Concurrent Sessions: 1. The Corrupt Origins of Central Banking in America. <b>DiLorenzo (WOLFE HALL) A/V/L</b>
3:00 – 4:00 p.m.	2. The Constitution and the Free Market V. <b>Napolitano</b> (Pre-registration required) <b>(CONDON HALL)</b>
4:00 p.m.	Bookstore closes
4:00 – 4:45 p.m.	Concurrent Sessions: 1. Applications of Austrian Economics to Business and Management. <b>Klein (WOLFE HALL) A/V/L</b> 2. Theory and History. <b>Gordon (CONDON HALL) A/V/L</b> 3. Government Funding and Science (Graduate Seminar by invitation only). <b>Butos (SCHLARBAUM SEMINAR ROOM) A</b>
4:45 – 5:15 p.m.	Faculty Office Hours: <b>Block:</b> Faculty Office behind bookstore checkout <b>Butos:</b> Schlarbaum Seminar Room <b>DiLorenzo and Terrell:</b> Faculty Office, Research Wing, Second floor <b>Engelhardt and Powell:</b> Faculty Office near bookstore <b>Garrison and Herbener:</b> Ward Library Fireplace <b>Gordon:</b> Condon Hall <b>Klein:</b> Wolfe Hall <b>Murphy:</b> Massey Library, Third floor <b>Napolitano</b> Research Wing, Second floor <b>Thornton:</b> Research Wing, Second floor
5:00, 5:15, 5:30 p.m.	Shuttle from front door of the Institute to Village Dining Hall for dinner
5:30 p.m.	Institute closes
6:00, 6:15, 6:30 p.m.	Shuttle from Village Dining Hall to dorm and hotel
	Evening free

# Thursday July 28

Sponsor thank-you notes due at front desk today. Also please complete a conference evaluation form on the Mises U 2016 page of Mises Academy.

7:30 – 8:30 a.m.	Breakfast at Village Dining Hall, Auburn Univ. (wear nametag for admission)
7:15 – 8:15 a.m.	Shuttle from dorm and hotel to Village Dining Hall every 15 minutes
8:15 – 9:00 a.m.	Coffee at the Institute, shuttle from dorm, hotel, Village Dining Hall to the Institute every 15 minutes
9:00 – 9:45 a.m.	Ludwig von Mises. <b>North (WOLFE HALL) A/V/L</b>
10:00 – 10:45 a.m.	Concurrent Sessions: 1. Political Entrepreneurship and the Economics of Wealth Destruction. <b>DiLorenzo (WOLFE HALL) A/V/L</b>
10:00 – 11:00 a.m.	2. The Constitution and the Free Market VI. <b>Napolitano</b> (Pre-registration required) <b>(CONDON HALL)</b>
11:00 – 11:45 a.m.	Concurrent Sessions: 1. Issues in the Economics of Medical Care. <b>Terrell (WOLFE HALL) A/V/L</b> 2. Apriorism and Positivism in the Social Sciences. <b>Gordon (CONDON HALL) A/V/L</b>
11:45 a.m. – 1:00 p.m.	Lunch at the Institute
1:00 – 1:45 p.m.	Concurrent Sessions: 1. Development Economics: The Austrian Contribution. <b>Manish (WOLFE HALL) A/V/L</b>
1:00 – 2:00 p.m.	2. The Constitution and the Free Market VII. <b>Napolitano</b> (Pre-registration required) <b>(CONDON HALL)</b>
2:00 – 2:45 p.m.	Concurrent Sessions: 1. The Case for Privatization — of Everything. <b>Block (WOLFE HALL) A/V/L</b> 2. Is There a Skyscraper Curse? <b>Thornton (CONDON HALL) A/V/L</b>
3:00 – 3:45 p.m.	Concurrent Sessions: 1. War. <b>Woods (WOLFE HALL) A/V/L</b>
3:00 – 4:00 p.m.	2. The Constitution and the Free Market VIII. <b>Napolitano</b> (Pre-registration required) <b>(CONDON HALL)</b>
4:00 – 4:45 p.m.	Concurrent Sessions: 1. Hayek and Friedman: Head to Head. <b>Garrison (WOLFE HALL) A/V/L</b> 2. The Euro Crisis. <b>Howden (CONDON HALL) A/V/L</b> 3. Equilibrium versus Coordination in the Austrian and Walrasian Traditions (Graduate Seminar by invitation only). <b>Manish (SCHLARBAUM SEMINAR ROOM) A</b>
5:00 p.m.	Bookstore closes
5:00 – 5:30 p.m.	Faculty Office Hours <b>Napolitano:</b> Research Wing, Second floor <b>Block:</b> Faculty Office behind bookstore checkout <b>Woods:</b> Massey Library, Third floor <b>Howden:</b> Condon Hall <b>Manish:</b> Schlarbaum Seminar Room <b>Garrison:</b> Wolfe Hall <b>DiLorenzo:</b> Faculty Office, Research Wing, Second floor <b>Thornton:</b> Research Wing, Second floor <b>Terrell:</b> Faculty Office near bookstore
5:30 p.m.	Dinner at the Institute
6:30 – 7:00 p.m.	Written prelim for oral exams (optional). <b>(WOLFE HALL)</b>
7:15 p.m.	Chess Tournament (optional) <b>(WARD CONSERVATORY)</b>
7:00 – 9:00 p.m.	Study time and Social Hour (optional), shuttle from front door of the Institute to dorm and hotel every 15 minutes
9:00 p.m.	Institute closes

# Friday July 29

Questions for today's Faculty Panels due in the panel question box in Ward Conservatory by 2:45 p.m. today or you may email to **mthornton@mises.org**. Attendance certificates are at Registration Table in Ward Library after 2:00 today. Students who passed the preliminary exam should email to **pat@mises.org** by 4:00 today a list of concurrent classes attended or expected to attend. Attendance at plenary sessions is assumed.

7:30 – 8:30 a.m.	Breakfast at Village Dining Hall, Auburn Univ. (wear nametag for admission)
7:15 – 8:15 a.m.	Shuttle from dorm and hotel to Village Dining Hall every 15 minutes

8:15 – 9:00 a.m.	Coffee at the Institute, shuttle from dorm, hotel, Village Dining Hall to the Institute every 15 minutes
8:30 – 9:00 a.m.	Faculty Office Hours: <b>Napolitano</b> (Research Wing, Second floor)
9:00 – 9:45 a.m.	Concurrent Sessions: 1. Game Theory. <b>Engelhardt (WOLFE HALL) A/V/L</b> 2. New Modes in Central Bank Monetary Policy. <b>Howden</b> (Graduate Seminar by invitation only) <b>(SCHLARBAUM SEMINAR ROOM) A</b>
9:00 – 10:00 a.m.	3. The Constitution and the Free Market IX. <b>Napolitano</b> (Pre-registration required) <b>(CONDON HALL)</b>
10:00 – 10:45 a.m.	Concurrent Sessions: 1. The Gold Standard versus Fiat Money. <b>Salerno (WOLFE HALL) A/V/L</b> 2. Government and Big Business <b>Klein (CONDON HALL) A/V/L</b> 3. Product Regulation. <b>Terrell (SCHLARBAUM SEMINAR ROOM) A</b>
11:00 – 11:45 a.m.	Murray N. Rothbard. <b>Block (WOLFE HALL) A/V/L</b>
11:45 a.m. – 1:00 p.m.	Lunch at the Institute
1:00 – 1:45 p.m.	Concurrent Sessions: 1. Externalities, Public Goods, and the Role of Government. <b>Klein (WOLFE HALL) A/V/L</b> 2. Ten Things Millennials Should Know About Socialism. <b>DiLorenzo (CONDON HALL) A/V/L</b>
2:00 – 2:45 p.m.	Concurrent Sessions: 1. The Market for Security. <b>Murphy (WOLFE HALL) A/V/L</b> 2. Errors, Business Cycles, and Government Stimulus. <b>Engelhardt (CONDON HALL) A/V/L</b> 3. Free Trade and Its Enemies. <b>Herbener (SCHLARBAUM SEMINAR ROOM) A</b>
3:00 – 3:45 p.m.	Faculty Panels: Theory and Method: <b>Engelhardt, Garrison, Gordon, Herbener, Klein, Salerno (WOLFE HALL) A/V/L</b> Policy and History: <b>Block, DiLorenzo, Howden, Murphy, Terrell, Thornton, Woods (CONDON HALL) A/V/L</b>
4:00 – 4:45 p.m.	Panels continued (switching panels is encouraged)
5:00 p.m.	Dinner at Chipotle, 346 W. Magnolia Avenue (shuttle to Chipotle only in event of rain)
5:30 p.m.	Institute closes
6:00, 6:15, 6:30 p.m.	Shuttle from Chipotle to dorm and hotel
6:30 p.m.	Social hour and karaoke off-site with <b>Dr. Murphy</b> (optional) (Location TBA)

## Saturday July 30

Saturday is a relaxed day of optional sessions and fun activities, ending with an awards ceremony and informal cookout. A good day for shorts and flip-flops!

9:30 – 11:00 a.m.	Shuttle from dorm and hotel to the Institute every 15 minutes
9:30 – 11:00 a.m.	Drop-in brunch at the Institute
10:15 – 11:00 a.m.	Practical Career Advice for Young Austro-libertarians. <b>Raymond Walter (WOLFE HALL) A/V/L</b>
11:15 a.m. – 12:15 p.m.	The Contra-Krugman Show Live! <b>Tom Woods and Bob Murphy (WOLFE HALL) A/V/L</b>
12:30 – 3:30 p.m.	Ongoing board games in Condon Hall, with refreshments in outdoor dining area
12:30 – 1:30 p.m.	Liberty Elevator Pitch Competition. Hosted by <b>Bob Murphy (WOLFE HALL)</b> A fun, fast-paced competition open to all attendees to see who is the best salesperson for liberty. You have 60 seconds to make the case for either libertarianism or Austrian economics to our all-star panel of judges for the chance to win prizes from the Mises Bookstore!
12:30 – 3:00 p.m.	Oral Exams for Mündliche Prüfung finalists (locations will be posted in dining area)
2:00 – 3:00 p.m.	Mises Weekend Live! <b>Jeff Deist</b> interviews <b>Lew Rockwell</b> with audience Q&A <b>(WOLFE HALL) A/V/L</b>
3:30 p.m.	Closing remarks and Awards Ceremony <b>(WOLFE HALL) A/V/L</b> Cookout and social hour to follow, outdoor dining area
5:30 – 6:30 p.m.	Shuttle from front of Institute to Boyd Dorm and hotel every 15 minutes
6:30 p.m.	Institute closes

**The Institute is closed Saturday July 23 and Sunday July 31.**





**Boyd Dorm check-out times Sunday July 31: 8:00 a.m. – 5:00 p.m. (Email [pat@mises.org](mailto:pat@mises.org) to arrange check-out at any other time.) Upon departure please bring to the Boyd Dorm first floor front desk your blanket, pillow, and all other linens. Also bring your Boyd Dorm card and room key. There is a \$50 fee for lost keys or cards.**

## Optional Final Oral Exam (Mündliche Prüfung)

Mündliche Prüfung is an optional exam for students who would like to have their knowledge tested at the end of the conference. The exam is open only to students. Preliminary written testing on Thursday determines who is qualified to take the final exam on Saturday. Results of the preliminary testing will be posted on the bulletin board in the outdoor dining area on Friday. Students who are selected to participate in the oral exams on Saturday must be present at the closing ceremony that day. If you pass the preliminary exam, then you will email to [pat@mises.org](mailto:pat@mises.org) by Friday at 4:00 p.m. a typed list of concurrent classes you attended or will attend this week. On Saturday, a faculty jury will engage each of the preliminary passing examinees in a question-and-answer session *based on the readings and the lectures each has attended*. At graduation, those who pass the oral exams will receive a graded certificate. Each faculty panel will select two students as the leading candidates from its examinations. These finalists will then undergo a deeper examination by the entire faculty. The student selected by the faculty as the most learned of the conference will receive the Douglas E. French Prize of \$2,500. Second place receives the George and Joele Eddy Prize of \$1,800. Third place receives the Grant Aldrich Prize of \$1,000.

## Mises Institute Bookstore

Books may be purchased at the Mises Institute’s Diehl Bookstore throughout the week. Faculty are happy to autograph books. Inquire at the bookstore checkout about autographs, shipping, and student discounts.

## Photos

Download candid photos and the MU group photo at [mises.org/MUPhotos16](http://mises.org/MUPhotos16)

## Contact Information

Pat Barnett at Mises Institute	334.321.2147 (office next to front door), 334.332.5844 (cell), <a href="mailto:pat@mises.org">pat@mises.org</a>
Tiger Taxi	334.444.4444
Auburn Black Car (in-town or airport)	334.734.9440
Groome Airport Shuttle	334.821.3399
Lea Johnson Fegley (dorm and shuttle)	208.994.8894, <a href="mailto:lea@mises.org">lea@mises.org</a>

48-hour advance reservations are required for Airport Shuttles. Plan to arrive at the Atlanta airport at least one hour before flight departure for domestic flights, and at least two hours before flight departure for international flights. The shuttles request that you be waiting outside your dorm or hotel 30 minutes prior to scheduled pickup time. Shuttle schedules can be seen at [auburn.groometransportation.com](http://auburn.groometransportation.com).

## Announcements and Schedule Changes

Communicate with students and faculty, view faculty presentations, suggested readings, schedule changes and announcements at the MU Class of Mises Academy. Go to Mises Academy from the main page of [mises.org](http://mises.org). Log in at the top of the page and go to Conferences, then Mises University 2016. Password: MU2016

Applications are now being considered for 2017 Fellowships in Residence. See [mises.org/fellows](http://mises.org/fellows).

Mises University evening social hours are open only to Mises University attendees.

## Auburn University Library

The Auburn University Library, located at 231 Mell Street, across from Auburn University Hotel, is open to Mises Institute students for in-house research.

Sunday	1:00 p.m.– Midnight
Monday–Friday	7:30 a.m.– Midnight
Saturday	9:00 a.m.– Midnight

events

**September 16–17** — Supporters Summit, Asheville, North Carolina

**October 1** — The Mises Circle in Boston, Massachusetts

**November 5** — The Mises Circle in Dallas/Ft. Worth, Texas

**December 1** — Mises Institute Seminar with Tom Woods, Orlando, Florida

**March 10–11, 2017** — The Austrian Economics Research Conference, Mises Institute

**May 20, 2017** — The Mises Circle in Seattle

**June 4–9, 2017** — Rothbard Graduate Seminar, Mises Institute

**July 23–29, 2017** — Mises University, Mises Institute

---

Student scholarships available for all events. See [mises.org/events](http://mises.org/events) for details.

# Faculty Info:



Walter Block  
[mises.org/profile/walter-block](https://mises.org/profile/walter-block)



William Butos  
[mises.org/profile/william-n-butos](https://mises.org/profile/william-n-butos)



Thomas DiLorenzo  
[mises.org/profile/thomas-j-dilorenzo](https://mises.org/profile/thomas-j-dilorenzo)



Lucas Engelhardt  
[mises.org/profile/lucas-m-engelhardt](https://mises.org/profile/lucas-m-engelhardt)



Roger Garrison  
[mises.org/profile/roger-w-garrison](https://mises.org/profile/roger-w-garrison)



David Gordon  
[mises.org/profile/david-gordon](https://mises.org/profile/david-gordon)



Jeffrey Herbener  
[mises.org/profile/jeffrey-m-herbener](https://mises.org/profile/jeffrey-m-herbener)



David Howden  
[mises.org/profile/david-howden](https://mises.org/profile/david-howden)



Peter Klein  
[mises.org/profile/peter-g-klein](https://mises.org/profile/peter-g-klein)



G.P. Manish  
[mises.org/profile/g-p-manish](https://mises.org/profile/g-p-manish)



Robert Murphy  
[mises.org/profile/robert-p-murphy](https://mises.org/profile/robert-p-murphy)



Judge Andrew P. Napolitano  
[mises.org/profile/judge-andrew-p-napolitano](https://mises.org/profile/judge-andrew-p-napolitano)



Gary North  
[mises.org/profile/gary-north](https://mises.org/profile/gary-north)



Benjamin Powell  
[mises.org/profile/benjamin-powell](https://mises.org/profile/benjamin-powell)



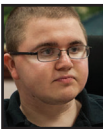
Timothy Terrell  
[mises.org/profile/timothy-d-terrell](https://mises.org/profile/timothy-d-terrell)



Mark Thornton  
[mises.org/profile/mark-thornton](https://mises.org/profile/mark-thornton)



Tom Woods  
[mises.org/profile/thomas-e-woods-jr](https://mises.org/profile/thomas-e-woods-jr)







Raymond Walter (Guest Lecturer)  
[mises.org/profile/raymond-walter](https://mises.org/profile/raymond-walter)

## Share your #MisesU experience on Facebook, Instagram, and Twitter!

Prizes will be given away every night to students who help us spread the word that #MisesU is the #BestWeekOfTheYear!

Also, follow us:

-  Facebook.com/Mises.Institute
-  Twitter: @Mises
-  Instagram: @MisesInstitute
-  Snapchat: MisesInstitute

And be sure to join the Mises Alumni group [facebook.com/groups/862707400432259/](https://facebook.com/groups/862707400432259/)



# Walking or Driving Directions

(All points are 1 mile or less.)

Do not park in Zones A or B on Auburn University campus to avoid ticketing. If you park on Auburn University campus and do not have a parking permit, park in Zones R, PC, or C where you will not be ticketed.

## Boyd Dorm to Mises Institute

Turn left onto Mell Street  
Left at dead-end onto Samford Avenue  
Pass Telfair-Peet Theatre and turn right onto Donahue Drive  
Pass baseball stadium on right  
Mises Institute is at the intersection of Donahue and W. Magnolia, next to Momma Goldberg's Deli  
*Parking at the Mises Institute is free, but limited.*

## Mises Institute to Boyd Dorm

From front of Mises Institute, right onto Donahue Drive at the red light  
Left onto Samford Avenue  
Right onto Mell Street  
Right onto P.O. Davis Drive to Boyd Dorm  
*With AU Visitor Parking Permit you may park in any of the lots in the Resident Hill Boyd Dorm area.*

## Boyd Dorm to Downtown Auburn (intersection of W. Magnolia Ave./College St.)

South of the Boyd Dorm, turn left onto P.O. Davis Drive  
Left onto Mell Street  
Right onto Samford Avenue  
Left onto S. College Street

## Downtown Auburn (intersection of W. Magnolia Ave./College St.) to Boyd Dorm

South onto College Street  
Right onto Samford Avenue  
Left onto Mell Street  
Left onto P.O. Davis Drive

## Boyd Dorm to Village Dining Hall (230 Beard-Eaves Ct.)

Go North toward Samford Avenue  
Left onto Samford Avenue  
Right onto Donahue Drive  
Left onto Beard-Eaves Court  
The dining hall will be on your right, facing the Auburn Arena

## Village Dining Hall to Mises Institute

Go right to Thach Concourse Road  
Left onto War Eagle Way path  
Stay on the War Eagle Way path through the parking lot until you reach Magnolia Avenue  
The Mises Institute will be on your left across the street

## Mises to Chipotle (346 W. Magnolia Avenue; Friday dinner)

From front of Mises Institute, turn left onto Magnolia Avenue  
Cross Donahue Drive and Chipotle is on left

## Chipotle to Boyd Dorm

From front of Chipotle turn right onto Magnolia Avenue  
Left onto Donahue Drive at the red light  
Left onto Samford Avenue  
Right onto Mell Street  
Right onto P.O. Davis Drive to Boyd Dorm

Special thanks to the generous donors who made Mises University possible.